



#### AMENDMENTS:

**MARCH 16<sup>TH</sup>; 5.2.1, 5.4, 15.3, 16.7, TABLE FOUR SUMMARY OF PAYMENTS - STAGE 1 PRELIMINARY ENTRY DEADLINE CHANGED TO MARCH 23<sup>RD</sup> 2015**

**MARCH 18<sup>TH</sup>; 4.3, 4.5 - INCREASE OF EUROPEAN TEAM SIZE BY 1, FROM 7 SAILORS TO 8, WITH MAXIMUM 5 BEING OF THE SAME GENDER**

**MARCH 22<sup>ND</sup>; A) 4.4 - INCREASE OF NON EUROPEAN TEAM SIZE BY 1, FROM 4 SAILORS TO 5 WITH MAXIMUM 4 BEING OF THE SAME GENDER**

**B) ATTACHMENT 1: RACING AREA – NEW SITE MAP**

**JULY 6<sup>TH</sup>; EVENT TITLE CHANGED TO “MAGIC MARINE OPTIMIST EUROPEAN CHAMPIONSHIP 2015”**

#### ORGANISING AUTHORITY

The Magic Marine Optimist European Championship 2015 is organised by the Welsh National Sailing Academy in conjunction with the International Optimist Class Association (UK) with the endorsement of the Royal Yachting Association under the authority of the International Optimist Dinghy Association (IODA).

## NOTICE OF RACE

### 1. RULES

- 1.1 The Championship will be governed by the 'rules' as defined in *The Racing Rules of Sailing*.
- 1.2 The current Conditions of the IODA will apply.
- 1.3 No national prescriptions will apply.
- 1.4 Rule 61.1 "Informing the Protestee" is changed as follows:
  - 1.4.1 Add to rule 61.1(a) "The protesting boat shall inform the Race Committee of the boat/s being protested at the finishing line immediately after finishing."
- 1.5 Rule 40 and the preamble to Part 4 are changed as follows:
  - 1.5.1 The first sentence of rule 40 is deleted and replaced by: "Each competitor shall wear a personal flotation device (PFD) according to class rule 4.2 (a), properly secured at all times while on the water except when temporarily adding or removing clothing."
  - 1.5.2 Add to the preamble of Part 4, after 'racing': ", except rule 40 as amended by instruction 1.5.1"
- 1.6 Rule changes will appear in full in the sailing instructions. The sailing instructions may also change other racing rules.

### 2. ADVERTISING

- 2.1 Sailor advertising is permitted on the hull as per ISAF Regulation 20.3.2 but as restricted by class rule 2.8.
- 2.2 Boats may be required to display advertising chosen and supplied by the Organising Authority.

### 3. CAMERAS AND ELECTRONIC EQUIPMENT

Boats may be required to carry cameras, sound equipment or positioning equipment as specified by the Organising Authority. Information from this equipment shall not be used by a boat as evidence in a hearing. This changes rule 63.6.

### 4. ELIGIBILITY

- 4.1 The Championship is open to competitors sailing on boats of the Optimist class that fulfil the eligibility requirements stated below.



## NOTICE OF RACE

- 4.2 Competitors shall enter through the national association member of IODA (hereinafter 'member') they represent.
- 4.3 Each European member of IODA may enter up to 8 competitors with a maximum of 5 being of the same gender.
- 4.4 Each non-European member of IODA may enter up to 5 competitors with a maximum of 4 being of the same gender.
- 4.5 The defending European (closed) champions may participate, if eligible, in addition to the 8 competitors allocated to their members.
- 4.6 The host nation may enter two teams.
- 4.7 Competitors entering the Optimist European Championship 2015 will not be allowed to participate in the Optimist World Championship 2015. This rule does not apply to the defending 2014 European (closed) champions (boy and girl), who may participate, if eligible, in both events.
- 4.8 Each team shall be accompanied by a Team Leader and may be accompanied by one other adult.
- 4.9 Each competitor shall have been born in 2000 or later.
- 4.10 Competitors shall be either national or bona fide residents of the country they represent, unless otherwise agreed by the IODA Executive Committee. A competitor who has represented one country at an IODA World or Continental Championship shall not represent another member country except in cases of alteration of residence, which cases shall be approved by the IODA Executive Committee.
- 4.11 Attention is drawn to ISAF Regulation 19 Eligibility Criteria.

## 5. ENTRY

- 5.1 Entries shall be made via the event online entry system. This can be accessed from the event website [www.optimisteuros2015.com](http://www.optimisteuros2015.com)
- 5.2 There are four stages to the entry process. All stages must be completed before a team can be formally registered to sail at the event. One bank transfer may be made to cover all Stage 1 and Stage 2 fees due.
  - 5.2.1 **Stage 1 – Preliminary Entry** shall be completed by **March 23, 2015**. Stage 1 includes: sailor entry (50% fees), adult entry (50% fees), charter support boat reservation (50% fees), and charter Optimist reservation (50% fees).
  - 5.2.2 **Stage 2 - Second Entry** shall be completed by **May 4, 2015**. Stage 2 includes: sailor entry (50% fees), adult entry (50% fees), charter support boat reservation (50% fees), charter Optimist reservation (50% fees), non-charter support boat registration (100% fees), early arrival charter Optimist reservation (100% fees), early arrival charter support boat reservation (100% fees), and ground transportation on Official Arrival/ Departure Days (100%fees)
  - 5.2.3 **Stage 3 - Final Entry** shall be completed as soon as the members of the delegation are defined but not later than **June 1, 2015**.
  - 5.2.4 **Stage 4 - Registration at the venue:** see also 5.9. Stage 4 includes: damage deposits for both Optimist charter and support boat charter (100% fees), accommodation damage deposit (100% fees), and any outstanding payments resulting from late payment surcharges and currency exchange rate fluctuations on payments.
- 5.3 Required fees are described in Section 6 (Entry Fees), Section 15 (Support Boats) and Section 16 (Charter Boats). See the payment instructions in 6.5, 15.3, and 16.7. Additional information in Section N. (Summary of Payments) also refers.
- 5.4 **Stage 1 entry fees should be received in the relevant bank account within 5 days of submitting the online entry. Stage 1 entries made after March 23 or made by March 23 but**



## NOTICE OF RACE

received after March 28, 2015 will automatically incur a 20% late payment surcharge in the selected currency calculated at the exchange rate on the date the fees are received. This will be applied at the time of entry and collected at Stage 4.

- 5.5 Stage 1 fees received after 5 days of submitting the online entry will be recalculated at the exchange rate on the date the fees are received. Any increase in fees due as a result will be collected at Stage 4.
- 5.6 Stage 2 entry fees should be received into the relevant bank account within 5 days of submitting the online entry. Stage 2 entries made after May 4, 2015 or made by May 4 but received after May 9, 2015 will automatically incur a 20% late payment surcharge in the selected currency calculated at the exchange rate on the date the fees are received.. This surcharge will be applied at time of entry and collected at Stage 4.
- 5.7 Stage 2 fees received after 5 days of submitting the online entry will be recalculated at the exchange rate at the date the fees are received. Any increase in fees due as a result will be collected at Stage 4.

NOTE: Throughout this document, 'late payment' refers to the amount of money not received in accordance with 5.4 and 5.6. The late payment surcharge (20%) will be applied to the amount received late, not to the total amount due before the deadline, or to the total amount corresponding to the relevant item.

- 5.8 Competitors entering and withdrawing their entry not later than May 15, 2015 will be refunded 60% of the fees paid at Stage 1 and/or Stage 2 of the entry process (except for any bank cost incurred due to the refund). Competitors withdrawing their entry after that date will not be refunded. Currency exchange rate will be as of the date of the actual refund.
- 5.9 Competitors, team leaders and other adults (when they are members of the official delegation) shall complete an on-site registration at the Event Race Office (Stage 4). The on-site registration of each competitor will not be completed until any outstanding fees have been paid, and the measurement form issued by the Measurement Sub-Committee (see paragraph 9) has been returned to the Race Office.

## 6. ENTRY FEES

- 6.1 Entry fees will be **£530 (GBP)\* per competitor and £500 (GBP)\* per adult.**
- 6.2 Accommodation and meals are included in the entry fee for the duration of the Championship (from the Official Arrival Day to the Official Departure Day inclusive).
- 6.3 Teams have the option of paying all fees in either GBP or EUR by selecting the required currency at Stage 1 of the entry process. The same currency MUST be used for all transactions at both Stage 1 and Stage 2 of the online entry process.
- 6.4 Please make payments to the bank account that matches the currency selected during the online entry process at Stage 1 and Stage 2.
- 6.5 Payment instructions:

a) For Payment in GBP:

**Beneficiary:** Optimist Europeans 2015

**Name of bank:** Barclays Bank

**Bank address:** Barclays Bank, Leicester, LE87 2BB, Great Britain

**Sort Code:** 20-78-61

**Account Number:** 60851507

**IBAN:** GB07 BARC 2078 6160 8515 07

**BIC Code:** BARCGB22



**NOTICE OF RACE**

b) For Payment in EUR:  
**Beneficiary:** Optimist Europeans 2015  
**Name of bank:** Barclays Bank  
**Bank address:** Barclays Bank, Leicester, LE87 2BB, Great Britain  
**Sort Code:** 20-78-61  
**Account Number:** 83420733  
**IBAN:** GB37 BARC 2078 6183 4207 33  
**BIC Code:** BARCGB22

- 6.5.1 Fees shall be paid in Pounds Sterling (GBP) OR Euros (EUR) as shown in the Additional Information Section N. (Summary of Payments). Where fees are stated in a different currency from that selected by the team, an exchange rate, calculated on the day of entry at 0400 GMT based on rates published on xe.com, will be applied to convert the stated currency into the selected currency. Throughout this document an asterisk (\*) identifies those fees to which a GBP/EUR or EUR/GBP exchange rate as described above might be applicable.
- 6.5.2 Fees shall be free of bank commissions. Any bank fee will be charged to the competitors and collected at Stage 4.

**7. FORMAT OF THE CHAMPIONSHIP**

- 7.1 The Optimist European Championship comprises two equal events, one for boys and one for girls. Girls and boys will sail in separate fleets.
- 7.2 Each fleet will be divided into divisions, as far as possible with the same number of boats.
- 7.3 The initial allocation to divisions will be done by the Race Committee on July 18th with the list of competitors already registered by the time of the allocation. Competitors registering later will be added at the bottom of the sorted list in the order of registration.
- 7.4 The format of the Championship is a qualifying series followed by a final series.
- 7.5 If minimum 5 races have been completed at the end of the third scheduled racing day in the opening series, the following days will be final series.
- 7.6 If minimum 5 races have not been completed at the end of the third scheduled racing day, the following day(s) will be sailed in the opening series until the minimum 5 races have been completed. If so, the other day(s) will be final series.
- 7.7 An opening series race will not count until all divisions in the opening series have completed the same number of races.
- 7.8 Final series: Each fleet will be divided into divisions as far as possible with the same number of boats in Gold, Silver and Bronze division (if needed).

**8. PROGRAM:**

**TABLE ONE: PROGRAM**

Friday July 17	Official Arrival Day. Registration and Measurement. Official accommodation available from 1400.
Saturday July 18	Registration and Measurement. Team Leaders' meeting. Practice race.



**NOTICE OF RACE**

	Opening Ceremony.
Sunday July 19	Races.
Monday July 20	Races.
Tuesday July 21	Races.
Wednesday July 22	Races.
Thursday July 23	Races Prize Giving and Closing Ceremony
Friday, July 24	Official Departure Day. Accommodation provided until 1100.

8.1 10 races are scheduled with a maximum of three races per day.

**9. MEASUREMENT**

- 9.1 Each boat shall produce a valid Registration Book and each sail shall be accompanied by the corresponding Sail Measurement Certificate (CR 2.5.6 and 6.1.4).
- 9.2 Competitors shall use only one hull, dagger board, rudder (with tiller and extension), mast, boom, sprit and sail during the Championship. These parts of the equipment will be scrutineered and may be measured by the Measurement Sub-Committee according to the Measurement Regulations, and approved by this Sub-Committee to be complying with the Class Rules.
- 9.3 Substitution of damaged or lost equipment will not be allowed unless approved in writing by the Race Committee. Requests for substitution shall be made to the Race Committee at the first reasonable opportunity.
- 9.4 Substitution of damaged equipment may be permitted providing that the relevant form has been filled in at the Race Office and both the damaged and the substituting equipment has been checked by the Measurement Sub-Committee and the substituting equipment has been scrutineered by the Measurement Sub-Committee.
- 9.5 If the substitution was made on the water between races, both the damaged and the substituting pieces of equipment shall be presented to the Measurement Sub-Committee after the end of the day's racing. In this case, the substitution is subject to the approval of the Race Committee given retrospectively.
- 9.6 Only boats chartered through the Organising Committee may carry national letters or sail numbers in contravention of the Class Rules. The national letters to be carried by these boats shall be those of the country entering the chartered boat, and the number shall consist of the number of digits equal to the most recently issued sail number in that country. Boats not chartered through the Organising Committee shall comply with the Class Rules.
- 9.7 Hulls chartered through the Organising Committee are exempt from complying with Class Rule 2.4.3 (b) and (c) and hence from CR 2.4.1. All other hulls shall comply with the Class Rules.
- 9.8 Competitors are only allowed to compete in the championship in boats correctly registered in the country of the competitor or charter boats officially chartered for the championship through the Organising Committee.
- 9.9 Sails measuring to the maximum limits during the measurement days may be inspected again during the championship at the discretion of the event measurer.
- 9.10 Sails to be used during the Championship shall have been measured before inspection at the Championship. If a sail is presented unmeasured (or without the Sail Measurement Certificate), it will be measured at the Championship and a certificate will be issued at a



## NOTICE OF RACE

cost of GBP35, payable to IODA at the event. Measurement of country letters and sail numbers is available for free.

- 9.11 GRP boats shall be equipped with Epoxy foils.
- 9.12 Once a boat has completed measurement, the hull may not be removed from the boat park without the permission of the Race Committee. At the venue, no item of equipment may be cleaned using detergent unless permitted by the Race Committee.

### 10. SAILING INSTRUCTIONS

---

Sailing instructions will be available upon registration at the venue.

### 11. VENUE

---

The Championship will be held in the town of Pwllheli. The shore venue will be the Welsh National Sailing Academy and the racing area will be on Tremadog Bay.  
Club Address: Plas Heli Cyf, Yr Hafan, Pwllheli, Gwynedd, LL53 5YT Great Britain.

### 12. THE COURSE

---

- 12.1 The course for the fleet racing will be an outer-loop trapezoid with the finish line at the end of the second windward leg.

### 13. PENALTY SYSTEM

---

- 13.1 Appendix P will apply.
- 13.2 Decisions of the Jury will be final as provided in rule 70.5.

### 14. SCORING

---

- 14.1 3 races are required to be completed to constitute a series.
- 14.2 When fewer than 5 races have been completed, a boat's series score will be the total of her race scores.
- 14.3 When 5 or more races have been completed, a boat's series score will be the total of her race scores excluding her worst score.

### 15. SUPPORT BOATS

---

- 15.1 Team support boats shall be registered with the Organising Authority and used according to the following conditions:
  - 15.1.1 All support boats shall clearly display the 3 letter national code of their ISAF Member National Authority at all times while afloat. The minimum height for the letters shall be 200mm and visible from both sides of the boat. Only flags supplied by the Organising Authority shall be displayed by support boats.
  - 15.1.2 Unless otherwise decided by the Organising Authority, from July 18th each boat shall be shared by coaches of at least two different countries. No more than one person from each member shall be on the water in the boat at the same time.
  - 15.1.3 Fuel and other consumables shall be paid by the teams using the boat.
  - 15.1.4 Every support boat shall have a VHF radio. Radios will not be provided and every coach should bring their own.
  - 15.1.5 Coaches and other personnel on support boats shall wear a life jacket.
  - 15.1.6 All support boat drivers shall be attached to the support boat by a 'kill cord' lanyard when the engine is switched on.
  - 15.1.7 Teams may bring their own support boats. A registration fee of €50 EUR\* for each



## NOTICE OF RACE

team support boat brought to the event is payable to the Organising Authority at Stage 2 of the online entry process. Please refer to 5.6, 5.7, and N. (Summary of Payments). This fee is for launching, recovery, and mooring of the support boat. Support boats must only be launched and recovered by the Organising Authority or their contractor.

- 15.2 Team support boats will be available for charter from the Organising Authority as per terms of the Charter Agreement during the Regatta days (July 18th to July 23<sup>rd</sup> inclusive) at a Support Boat Fee of €750 (EUR)\* per coach inclusive of the Boat Registration Fee.
- 15.3 **Team support boat reservations shall be made by filling in the required information online at Stage 1 of the entry process on or before March 23, 2015, accompanied by a first payment equal to 50% of the total amount to be paid. The balance of fees shall be received on or before May 4<sup>h</sup>, 2015 (Stage 2).** For payment terms and conditions refer to 5, 6, and N (Summary of Payments). Availability of places on support boats is not guaranteed for reservations and/or payments made after **March 23, 2015**. Fees shall be free of bank commissions. Any bank fee will be charged to the competitors and collected at Stage 4.
- 15.4 The conditions for using a team support boat are available on the Event Website. The Agreement for use will be between the Organising Authority and the driver.
- 15.5 A damage deposit of €300 per boat will be charged at registration and refunded at the end of the championship provided the boat is in good condition. Should the Organising Authority decide to deduct from the damage deposit, it may require that the deposit be restored to its original amount before the coaches are permitted to use the boat again. Any remaining deposit will be refunded at the end of the Championship. Damage deductions will be shared by the teams using the boat.

## 16. CHARTER BOATS

- 16.1 Charter boats are not mandatory.
- 16.2 The charter boats will be provided by Winner Optimist ApS. They will be allocated on a random basis to individual competitors by the Organising Authority under the supervision of the IODA Executive Committee.
- 16.3 Competitors shall not modify the boats or cause them to be modified in any way except that
  - A compass may be tied or taped to the hull or spars;
  - Wind indicators, including yarn or thread, may be tied or taped anywhere on the boat;
  - Hulls, dagger boards and rudders may be cleaned, but only with water;
  - Adhesive tape may be used anywhere above the water line; and
  - All fittings or equipment designed to be adjusted may be adjusted, provided that the Class Rules are complied with.
- 16.4 Competitors may use their own foils, spars, fittings and running rigging.
- 16.5 Charter boats will be complete with blocks, airbags, padded toe straps, racing spars, racing foils, mainsheets, bowlines and trolley. Paddle, bailers and sails will not be provided.
- 16.6 The **charter fee** for 8 Championship days (July 17th to July 24th inclusive) will be **€400 (EUR)\* per boat**.
- 16.7 **Reservation of charter boats shall be made by completing the required information online at Stage 1 of the entry process by March 23, 2015, accompanied by a first payment equal to 50% of the total amount to be paid (€200 (EUR))\*.** The balance of fees shall be received on or before **May 4, 2015 (Stage 2)**. For payment terms and conditions refer to 5, 6, and Section N (Summary of Payments). Availability of charter boats is not



**NOTICE OF RACE**

guaranteed for payments and/or reservations made later than **March 23, 2015**. Fees shall be free of bank commissions. Any bank fee will be charged to the competitors and collected at Stage 4.

- 16.8 Boats may be chartered before the Event at a fee of €40 (EUR)\* per day. See E.
- 16.9 The contract for charter boats will be between Winner Optimist ApS and the charterer. The conditions for charter are available on the Event Website [www.optimisteuros2015.com](http://www.optimisteuros2015.com).
- 16.10 In addition to the charter fee a damage deposit of €150 (EUR) will be required on handover of each boat at Stage 4, - to be refunded if no damage has occurred.
- 16.11 All queries in relation to chartering of Optimists should be directed to the Event Administrator. Refer to 20 for contact details.

**17. PRIZES**

- 17.1 Prizes will be awarded at least to:
  - 17.1.1 The three best-placed male competitors, regardless of their continent of residence;
  - 17.1.2 The three best-placed female competitors, regardless of their continent of residence;
  - 17.1.3 The three best-placed male competitors whose IODA member is European, the first of whom will become the European Champion 2015;
  - 17.1.4 The three best-placed female competitors whose IODA member is European, the first of whom will become the European Champion 2015;
- 17.2 The Organizing Committee may decide to award extra prizes.

**18. DISCLAIMER OF LIABILITY**

- 18.1 Competitors participate in the Championship entirely at their own risk and responsibility. See rule 4, Decision to Race.
- 18.2 The Organising Authority and any other party involved in the organisation of the Championship will accept no liability whatsoever for any injury, damage, loss or claim, whether personal or material, incurred by or inflicted to competitors before, during or after the Championship.

**19. INSURANCE**

The purchase of third-party liability event insurance from IODA is mandatory. The purchase will be arranged at Stage 4 of the entry process at a cost of €10 (EUR) per competitor and per coach, payable to the organisers upon arrival, before registration is completed. Details of this insurance can be found at: [http://www.optiworld.org/uploaded\\_files/thirdParty.pdf\\_1948\\_en.pdf](http://www.optiworld.org/uploaded_files/thirdParty.pdf_1948_en.pdf)

**20. FURTHER INFORMATION:**

**TABLE TWO : CONTACT DETAILS**

For further information and queries, please contact:

Name:	Fiona Rainback, Event Administrator
Phone:	+44 7776 463696
E-mail:	admin@optimisteuros2015.com
Website:	<a href="http://www.optimisteuros2015.com">www.optimisteuros2015.com</a>

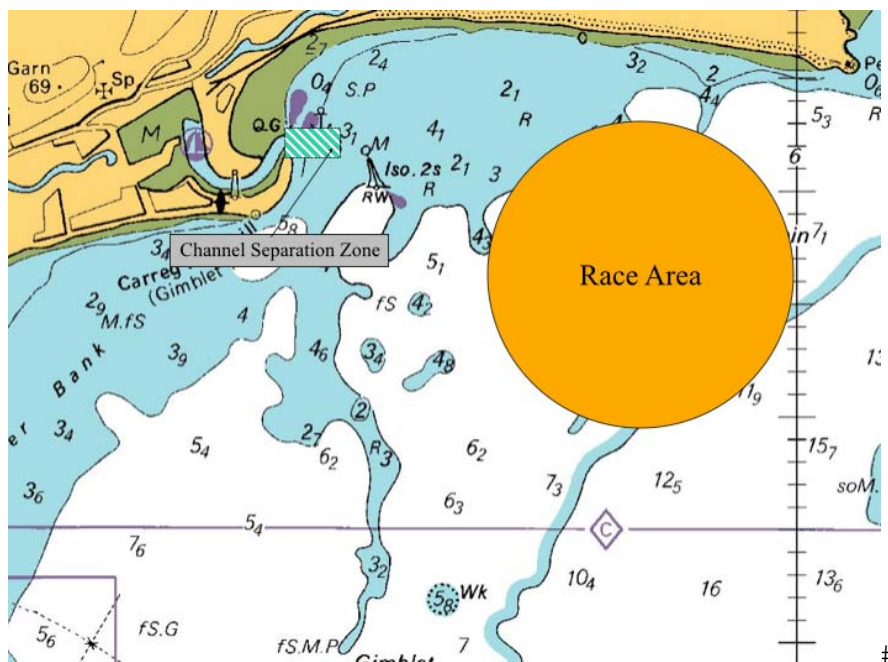
- 20.1 Each participating country shall designate a person to be the official contact with the Organising Committee and provide an e-mail address.





NOTICE OF RACE

ATTACHMENT 1: RACING AREA





MAGIC MARINE  
OPTIMIST EUROPEAN  
CHAMPIONSHIP  
17th-24th July



**ADDITIONAL INFORMATION**

**THE FOLLOWING POINTS ARE NOT INCLUDED WITHIN THE RULES OF THE EVENT**

**A. BEHAVIOUR**

- A.1. *Team members and officials shall observe the regulations of the host club and the house rules of the hotel and shall behave appropriately at all times. Unacceptable behaviour at any time, whether on shore or afloat, with or without any damage to the facilities, may be investigated by the Jury who may call a hearing and impose a scoring penalty when appropriate.*

**B. ACCOMMODATION, LOCAL TRANSPORTATION AND MEALS**

- B.1. *Competitors and team officials will be housed at the Hafan y Mor Holiday Park, Pwllheli, Gwynedd, North Wales, LL53 6HX which is a 5 minute drive from the club. Official accommodation will be available from 1400 on July 17 until 1100 on July 24, 2015. [HTTP://WWW.HAVEN.COM/PARKS/NORTH-WALES/HAFAN-Y-MOR/FAQS.ASPX](http://www.haven.com/parks/north-wales/hafan-y-mor/faqs.aspx)*
- B.2. *Free Transportation on shuttle busses will be provided between the accommodation and the club.*
- B.3. *Breakfast will be served at the accommodation. Dinner will be served at the accommodation or at the Club. Packed lunches will be collected by the Team Leaders at the club each morning from 18 July. The first official meal will be dinner on July 17, 2015 and the last official meal will be breakfast on July 24, 2015.*
- B.4. *A damage deposit of £100 per apartment will be charged by Hafan y Mor Holiday Park and will be refunded if no damage has occurred. The damage deposit and other extra charges will be paid directly to the accommodation and may be paid cash or by credit card.*
- B.5. *Special food can be provided if requested in advance. Please send any special request filling in the relevant field in the Final Entry Form.*

**C. EARLY ARRIVALS**

- C.1. *Teams wishing to arrive before the Official Arrival Date should contact the Hafan y Mor Holiday Park directly in order to book accommodation. The daily fee per person per day including breakfast will vary according to room type booked. Official accommodation will be available from July 17, 2015.*
- C.2. *Please make reservations as soon as possible to guarantee availability. Contact details of the hotels are on the Event Website.*
- C.3. *To facilitate continuity for room bookings from early arrival to event days, please fill in the early arrival booking information on the Final Entry (Stage 3).*
- C.4. *Club facilities will be open from July 13, 2015.*

**D. EARLY ARRIVAL SUPPORT BOATS**

- D.1. *It is possible to rent a support boat to be used before the Official Arrival Day from July 13 at €140(EUR)\* per boat per day excluding fuel. Reservation of such boats shall be made by filling in the required information online at Stage 2 of the entry process by May 4, 2015 and transferring 100% of the fees to the Organising Authority to guarantee availability. For*



**ADDITIONAL INFORMATION**

payment terms and conditions please see 5, 6 and N.(Summary of Payments). Allocation of early arrival support boats will be made in order of arrival.

- D.2. Late reservations and payments of early arrival support boats will incur a late payment surcharge of 20%.
- D.3. Early arrival fees shall be free of bank commissions. Any additional fees incurred will be collected at Stage 4 of the entry process.

**E. EARLY ARRIVAL CHARTER BOATS**

- E.1. Charter boats will also be available before the Official Arrival Day (from July 13 to July 16) at €40 (EUR)\* per boat per day. Reservations of pre-Championship charter boats shall be made by filling in the relevant information online at Stage 2 of the entry process by May 4, 2015, and transferring 100% of the fees direct to the Organising Authority. For payment terms and conditions refer to 5, 6 and N.(Summary of Payments)
- E.2. Late reservations and payments of early arrival support boats will incur a late payment surcharge of 20%.
- E.3. Early arrival fees shall be free of bank commissions. Any additional fees incurred will be collected at Stage 4 of the entry process.

**F. TRANSPORTATION TO AND FROM THE AIRPORT**

Transportation to and from Manchester will be provided at €35 (EUR)\* per person each way. You will be asked for your arrival and departure times in the Final Entry (Stage 3).

**G. SUPPORTERS**

Supporters shall make reservations by themselves. Please see [www.optimisteuros2015.com](http://www.optimisteuros2015.com) for Tourist Information and Visitor Accommodation.

**H. SOCIAL EVENTS**

To enhance the friendship between the competitors and to make their stay in Pwllheli more enjoyable, appropriate social events will be organised. Casual attire.

**I. MISCELLANEOUS**

- I.1. Each team is kindly requested to bring its own National Flag (100cm x 150cm).
- I.2. The organisers are not aware of any health precautions requested to enter the UK. However, we advise delegations to consult their travel agents or health authorities for any existing regulation for travellers visiting the UK.

**J. SAILING CONDITIONS:**

**TABLE THREE**

Daytime temperature Av.	16°C
Water temperature	17°C
Prevailing wind direction	SW



MAGIC MARINE

# OPTIMIST EUROPEAN CHAMPIONSHIP

17th-24th July



## ADDITIONAL INFORMATION

Wind speed	12 knots
Hours of good wind	10:30 – 1700
Tides	3.0 Mt average range
Current	0.3 Knt-springs 0.1 Knt-neaps

### K. VISA REQUIREMENTS

Delegations shall contact a British Embassy or Consulate in their country to get the latest visa requirements.

### L. SPECTATOR BOATS

There may be spectator boats available. Fees will be announced later in the event website.

### M. CHANDLERY AND REPAIRS

Chandlery and repairs will be available in the local vicinity.

### N. SUMMARY OF PAYMENTS:

#### TABLE FOUR: SUMMARY OF PAYMENTS

#### Stage 1: Preliminary Entry

Stage 2: Secondary Entry

Stage 4: Registration at the Venue

\*A GBP/EUR or EUR/GBP exchange rate will be applied where the team is entering in a different currency to that stated in Table Four: Summary of Payments. See also 6.5.1

Entry	ITEM	COST	Curr	DEADLINE	Method	NoR
<b>Required Payments</b>						
Stage 1	Entry Fee Sailor	265* per Sailor	GBP	23 <sup>rd</sup> March 2015	Bank Transfer	5 & 6
Stage 1	Entry Fee Adult	250* per Adult	GBP	23 <sup>rd</sup> March 2015	Bank Transfer	5 & 6
Stage 1	Support Boat Charter Fee (Inclusive of Boat Registration Fee)	375* per Coach Fuel not included	EURO	23 <sup>rd</sup> March 2015	Bank Transfer	15
Stage 1	Optimist Charter Fee	200* per Optimist	EURO	23 <sup>rd</sup> March 2015	Bank Transfer	16.6
Stage 2	Entry Fee Sailor	265* per Sailor	GBP	4th May 2015	Bank Transfer	5 & 6
Stage 2	Entry Fee Adult	250* per Adult	GBP	4th May 2015	Bank Transfer	5 & 6

**MAGIC MARINE****OPTIMIST EUROPEAN CHAMPIONSHIP**

17th-24th July

**ADDITIONAL INFORMATION**

Stage 2	Support Boat Charter Fee (Inclusive of Boat Registration Fee)	375* per Coach Fuel not included	EURO	4th May 2015	Bank Transfer	15
Stage 2	Support Boat Registration Fee for non chartered support boats	50* per Support Boat	EURO	4th May 2015	Bank Transfer	15
Stage 2	Optimist Charter Fee	200* per Optimist	EURO	4th May 2015	Bank Transfer	16.6
Stage 4	Charter Support Boat Damage Deposit	300 per support boat (Refundable)	EURO	Paid upon handover of boat	Card or Cash payment at event	15.5
Stage 4	Optimist Charter Damage Deposit	150 per Optimist	EURO	Paid upon handover of boat	Card or Cash payment at event	16.10
Stage 4	Accommodation Damage Deposit	100 per apartment	GBP	Paid on arrival at accommodation	Card or Cash payment at event	B.4
Stage 4	Sail measurement for sails without certificate	35 per sail	GBP	Paid to IODA at the event	Cash	9.10
<b>Optional Payments</b>						
Stage 2	Support Boat Early Arrivals	140* per Day Fuel not included	EURO	4th May 2015	Bank Transfer	D.1
Stage 2	Optimist Charter Boat Early Arrival Fee	40* per Day	EURO	4th May 2015	Bank Transfer	16.6 / E.1
Stage 2	Transportation on Official Arrival and Departure Days	35* per person each way from Manchester	EURO	4th May 2015	Bank Transfer	F
Stage 4	Acc. early arrivals	Various	GBP	Booked direct with Accommodation Provider Hafan Y Mor		C