



ORGANISING AUTHORITY

The Magic Marine Optimist European Championship 2015 is organised by the Welsh National Sailing Academy in conjunction with the International Optimist Class Association (UK) with the endorsement of the Royal Yachting Association under the authority of the International Optimist Dinghy Association (IODA).

SAILING INSTRUCTIONS

ABBREVIATIONS

DP	Rules for which the penalties are at the discretion of the International Jury
NP	Rules that are not grounds for protest by a boat (This changes rule 60.1 (a))

1. RULES

- 1.1. The Championship will be governed by the 'rules' as defined in The Racing Rules of Sailing.
- 1.2. No national authority prescriptions will apply.
- 1.3. Rule 61.1 'Informing the Protestee' is changed as follows:
 - 1.3.(a) Add to rule 61.1(a) 'The protesting boat shall inform the Race Committee of the boat/s being protested at the finishing line immediately after finishing.'
- 1.4. Rule 40 and the preamble to Part 4 are changed as follows:
 - 1.4.(a) The first sentence of rule 40 is deleted and replaced by: "Each competitor shall wear a personal flotation device (PFD) according to class rule 4.2 (a), properly secured at all times while on the water except when temporarily adding or removing clothing."
 - 1.4.(b) Add to the preamble of Part 4, after 'racing': ", except rule 40 as amended by instruction 1.4.(a)"
- 1.5. If there is a conflict between languages the English text will take precedence.

2. CAMERAS AND ELECTRONIC EQUIPMENT [NP]

- 2.1. [DP] Boats may be required to carry cameras, sound equipment or positioning equipment as specified by the organising authority. Information from this equipment shall not be used by a boat as evidence in a hearing. This changes rule 63.6.
- 2.2. The equipment provided, once placed on the boat as instructed by the organising authority, shall not be manipulated by the competitor or the coach in any way, except when so required by the organising authority.

3. COMMUNICATIONS WITH COMPETITORS

- 3.1. Notices to competitors will be posted on the official notice board located in the main hall.
- 3.2. When a visual signal is displayed over a fleet(s) flag, the signal applies only to that fleet(s). This changes the Race Signals preamble.
- 3.3. Signals made ashore will be displayed from the official flagpole located next to the bridge on the balcony.



- 3.4. [NP][DP] Boats shall not leave their berthing places until their Fleet flag is displayed with one sound, signalling that competitors in that fleet should commence in prescribed order to the beach launch area where they will wait for Flag D. Fleet flags will be displayed 45 minutes prior to flag D.
- 3.5. [NP][DP] Flag D displayed with one sound means: ‘the warning signal will be made not less than 60 minutes after flag D is displayed.’ Boats shall not launch until this signal is made.
- 3.6. Flag B displayed means ‘Sailing Instruction 19.3 applies.’

4. CHANGES TO SAILING INSTRUCTIONS

Any change to the Sailing Instructions will be posted on the official notice board before 0930 hours on the day it will take effect, except that any change to the schedule of races will be posted by 1900 hours on the day before it will take effect.

5. BOATS

- 5.1. [DP] Charter boats are not mandatory. Competitors sailing on charter boats shall use the boats according to paragraph 16 of the Notice of Race. Except for the foils, spars, fittings and running rigging, all equipment provided with the charter boats for sailing purposes shall be on the boat while afloat.
- 5.2. [DP] Competitors sailing on charter boats shall report any damage or loss of equipment, however slight, to the Organising Authority’s representative immediately after securing the boat ashore.
- 5.3. Failure or loss of chartered equipment will not be grounds for a request for redress. This changes rule 62.1(a).

6. FORMAT OF RACING

NOTE: For the purposes of this instruction, and when not stated otherwise, the term ‘boats’ refers to either boys or girls fleet. The described format applies to both of them separately.

- 6.1. For the practice race the fleet will be divided into two fleets as indicated below.

START	FLEETS	CLASS FLAG
1 st start	Boys Fleet Boats with an odd sail number (ending in 1, 3, 5, 7, 9)	Yellow
2 nd start	Boys Fleet Boats with an even sail number (ending in 0, 2, 4, 6, 8)	Blue
3 rd start	Girls Fleet Boats with an odd sail number (ending in 1, 3, 5, 7, 9)	Yellow
4 th start	Girls Fleet Boats with an even sail number (ending in 0, 2, 4, 6, 8)	Blue

- 6.2. The format of the Championship is a qualifying series followed by a final series.
- 6.3. **Qualifying series:**
 - 6.3.(a) Boats will be assigned to races as per instruction 6.7 to 6.13
- 6.4. **Final series**

- 6.4.(a) A final series will be scheduled if 5 or more qualifying races are completed for all fleets.
- 6.4.(b) Boys: Boats will be assigned to the Gold, Silver and Bronze Fleets on the basis of their ranking in the qualifying series. Gold, Silver and Bronze Fleets will have as near as possible the same number as competitors. Boats with the best ranking in the qualifying-series ranks will race all final-series races in the Gold fleet (yellow), Silver will follow Gold in ranking (blue) and Bronze (red) will follow Silver.
- 6.4.(c) Girls: Boats will be assigned to the Gold and Silver Fleets on the basis of their ranking in the qualifying series. Gold and Silver Fleets will have as near as possible the same number as competitors. Boats with the best ranking in the qualifying-series ranks will race all final-series races in the Gold fleet (yellow) and Silver (blue) will follow Gold in Ranking.
- 6.4.(d) Any recalculation of the final series ranking after the boats have been assigned to series fleets will not affect the assignments except that a redress decision may promote a boat to a higher fleet.
- 6.5. The qualifying series will take place on the first 3 days of racing, unless 5 races have not been completed by the end of day 3, in which case instruction 6.6 will apply. The final series will take place on days 4, 5 and 6 of racing.
- 6.6. If 5 races of a qualifying series have not been completed by the end of the third racing day, the qualifying series will continue on subsequent racing days until the end of the racing day in which a minimum of five qualifying races are completed.
- 6.7. For the qualifying series boats will be assigned to fleets according to the table in 6.10, of, as nearly as possible, equal size. The target fleet size is 50 for the boys and 50 for the girls.
- 6.8. Initial assignments will be made by the race committee according to instruction 6.9 and will be posted by 1800 hours on July 18, 2015 after the registration has been completed-
- 6.9. For the initial assignment, boats will be sorted by alphabetical order of national letters and then by numerical order of sail number. Boats in the sorted list will be allocated to fleets according to the pattern shown in the table in instruction 6.10
- 6.10. Boats will be reassigned to fleets after each day of racing, except if on the first day only one race is completed. If all fleets have completed the same number of races, boats will be reassigned on the basis of their ranking in the series. If all fleets have not completed the same number of races, the series scores for reassignment will be calculated for those races, numbered in order of completion, completed by all fleets. Reassignments will be made as follows:

Rank in series	Fleet Assignment	
	<i>Boys</i>	<i>Girls</i>
First	Yellow	Yellow
Second	Blue	Blue
Third	Red	Blue
Fourth	Red	Yellow
Fifth	Blue	Yellow
Sixth	Yellow	Blue
Seventh	Yellow	Blue
Eighth	Blue	Yellow
And so on...		

- 6.11. If two or more boats have the same rank, they will be entered in the left column in the order of fleets in instruction 6.9
- 6.12. Assignments will be based on the ranking available at 2100 that day regardless of protests or requests for redress not yet decided.
- 6.13. If all fleets have not completed the same number of races by the end of a day, the fleets with fewer races will continue racing the following day until all fleets have completed the same number of races. All boats will thereafter race in the new fleets.
- 6.14. [NP][DP] Boats shall display a coloured ribbon corresponding to the colour of her fleet, permanently fixed during the day's races and free to fly from the top of the sprit. The ribbons will be provided at Registration.

7. PROGRAMME

7.1. Programme

DATE	SCHEDULE
Friday, July 17	Official Arrival Day. Registration and Measurement. Official accommodation available from 1400
Saturday, July 18	Registration and Measurement. Team Leaders' meeting Practice race Opening Ceremony
Sunday, July 19	Coaches meeting. Races.
Monday, July 20	Coaches meeting. Races.
Tuesday, July 21	Coaches meeting. Races.
Wednesday, July 22	Coaches meeting. Races.
Thursday, July 23	Coaches meeting. Races Prize Giving and Closing Ceremony
Friday, July 24	Official Departure Day. Accommodation provided until 1100

- 7.2. 10 races are scheduled. Up to 3 races will be sailed on each day. One extra race per day may be sailed, provided that the change is made according to instruction 4.
- 7.3. The scheduled time of the coaches meeting each day is 1000 hours, except on Saturday, July 18 for the practice race day when it will be 1030 hours. Meetings will take place in The Hall.
- 7.4. The scheduled time of the warning signal for the first race each day is 1200 hours, except on July 18 for the practice race when it will be at 1300 hours.
- 7.5. To alert boats that a race or sequence of races will begin soon, the orange flag defining the starboard end of the starting line will be displayed with one sound at least five minutes before a warning signal is displayed.
- 7.6. On the last day of racing, no warning signal will be made after 1500 hours.

8. CLASS FLAGS

- 8.1. The fleet flags:
- 8.1.(a) Boys: A fleet flag is a flag of the colour of the corresponding fleet as per instruction 6.
- 8.1.(b) Girls: A fleet flag is a flag of the colour of the corresponding fleet as per instruction 6 with a red rhombus on it.



9. RACING AREA

Attachment 1 shows the location of the approximate racing area.

10. THE COURSE

The diagram in Attachment 2 shows the course, including the order in which marks are to be passed, and the side on which each mark is to be left.

11. MARKS

- 11.1. Mark 1, 2, 3S and 3P will be orange cylindrical marks.
- 11.2. New marks, as provided in instruction 13.1, will be blue cylindrical marks.
- 11.3. The starting and finishing marks will be race committee boats.
- 11.4. Except at a gate, a race committee boat signalling a change of a leg of the course is a mark as provided in instruction 13.2.

12. THE START

- 12.1. The starting line will be between staffs displaying orange flags on the starting marks..
- 12.2. [DP] When the warning signal for the first fleet has been made, boats from other fleets shall be in the waiting area. Boats may approach the starting line after the starting signal of the previous fleet.
- 12.3. When Flag U has been displayed as the preparatory signal, no part of a boat's hull, crew or equipment shall be in the triangle formed by the ends of the starting line and the first mark during the last minute before her starting signal. If a boat breaks this rule and is identified, she shall be disqualified without a hearing but not if the race is postponed or abandoned or restarted or resailed. This changes rule 26 Starting Races and rule A5 Scores Determined by The Race Committee. When flag U is used as the preparatory signal rule 29.1 Individual Recall does not apply. The scoring abbreviation for a flag U penalty is UFD. This changes rule A11 Scoring Abbreviations.
- 12.4. [DP] Boats that have finished shall return directly to the waiting area or ashore, keeping well clear of all boats racing and of all boats whose warning signal has been made.
- 12.5. The waiting area windward boundary will be designated by yellow pillar marks.
- 12.6. A boat starting later than 2 minutes after her starting signal will be scored Did Not Start without a hearing. This changes rules A4 and A5.
- 12.7. The starting order of the fleets will be:
 - 12.7.(a) Boys: Yellow, Blue and Red for all qualification races. Gold, silver and bronze for all final races.
 - 12.7.(b) Girls: Yellow and Blue for all qualification races. Gold and silver for final races.

13. CHANGE OF THE NEXT LEG OF THE COURSE

- 13.1. To change the next leg of the course, the Race Committee will lay a new mark (or move the finishing line) and remove the original mark as soon as practicable.



- 13.2. Except at a gate, boats shall pass between the race committee boat signalling the change of course and the nearby mark, leaving the mark to port and the race committee boat to starboard. This changes rule 28.1.

14. THE FINISH

The finishing line will be between staffs displaying orange flags on the finishing marks.

15. PENALTY SYSTEM

- 15.1. [NP][DP] A boat that has taken a penalty or retired according to rule 44.1 shall complete an acknowledgement form at the Race Office within the protest time limit.
- 15.2. The penalty for breaches of Class Rules, Sailing Instructions marked [DP] and Notice of Race 16.3 may be less than disqualification if the Jury so decides.
- 15.3. Appendix P will apply.

16. TIME LIMITS AND TARGET TIMES

- 16.1. Time limits and target times are as follows:

TIME LIMIT	MARK 1 TIME LIMIT	TARGET TIME
90 minutes	30 minutes	50 minutes

- 16.2. If no boat has passed Mark 1 within the Mark 1 time limit the race will be abandoned. Failure to meet the target time will not be grounds for redress. This changes rule 62.1(a).
- 16.3. Boats failing to finish within 20 minutes after the first boat sails the course and finishes will be scored Did Not Finish without a hearing. This changes rules 35, A4 and A5.

17. PROTESTS AND REQUESTS FOR REDRESS

- 17.1. To inform the Race Committee of the boat/s being protested, the boat intending to protest shall approach the race committee boat at the starboard end of the finishing line immediately after finishing and shall hail the protested boat's sail number/s while sailing along her starboard side.
- 17.2. Protest forms are available from Jury Secretary in the Race Office. Protests and requests for redress or reopening shall be delivered there within the appropriate time limit.
- 17.3. The protest time limit is 90 minutes after the last boat has finished the last race of the day or the Race Committee signal no more racing today, whichever is later.
- 17.4. Notices will be posted within 30 minutes of the protest time limit to inform competitors of hearings in which they are parties or named as witnesses. Hearings will be held in the jury room, located in the Old Clubhouse. No protest hearing will start after 2100 hours.
- 17.5. Notices of protests by the Race Committee or Jury will be posted to inform boats under rule 61.1(b).



- 17.6. A list of boats that under instruction 15.3 have been penalized for breaking rule 42 will be posted.
- 17.7. For the purpose of measurement protests as per rule 64.3 (b), the 'authority responsible' is the IODA Technical Committee representative.
- 17.8. On the last scheduled day of racing (including the last day of qualification and last day of final series) a request for reopening a hearing shall be delivered (this changes rule 66):
 - 17.8.(a) Within the protest time limit if the party requesting reopening was informed of the decision on the previous day;
 - 17.8.(b) No later than 30 minutes after the party requesting reopening was informed of the decision on that day.
- 17.9. On the last scheduled day of racing (including the last day of qualification and last day of final series) a request for redress based on a Jury decision shall be delivered no later than 30 minutes after the decision was posted. This changes rule 62.2.
- 17.10. Decisions of the Jury are final as provided in rule 70.5.

18. SCORING

- 18.1. Race scores (instructions 18.1.(a) and 18.1.(b) apply only when boats sail in separate fleets). 18.1.(b) applies only to the qualifying series.
 - 18.1.(a) Rule A4.2 is changed so that the scores are based on the number of boats assigned to the largest fleet.
 - 18.1.(b) If at the end of the last day of races some boats have more race scores than others, scores for the most recent races will be excluded so that all boats have the same number of race scores.
- 18.2. 3 races are required to be completed to constitute a series.
- 18.3. When fewer than 5 races have been completed, a boat's series score will be the total of her race scores.
- 18.4. When 5 or more races have been completed, a boat's series score will be the total of her race scores excluding her worst score.
- 18.5. To request correction of an alleged error in the posted races or series results, a boat shall complete a scoring enquiry form available at the Race Office.
- 18.6. Boats will be ranked in the order of their championship score within the fleet (Gold, Silver or Bronze) to which they were assigned under SI 6.4(b) or (c).
- 18.7. If at the end of the qualifying series some boats have more race scores than others, scores for the most recent races will be excluded so that all boats have the same number of races scored. For the purpose of rule 30.3, the first race of the final series will not be considered a restart or a re-sail of the excluded qualifying series race. This changes rule 30.3.

19. SAFETY REGULATIONS

- 19.1. [NP][DP] A boat retiring from a race shall notify a race committee or safety boat before leaving the course and shall complete the relevant form available at the Race Office.
- 19.2. Each day of competition the Coaches or Team Leaders shall notify the Race Office before D flag is displayed, of the boats not intending to race that day.

- 19.3. [NP][DP] **Check-out and Check-in Procedure.** The requirements of this instruction are specified for the safety of the competitors.
- 19.3 (a) The tally control point to check-out and check-in competitors will be located outside the new clubhouse at the gate to the beach.
- 19.3 (b) Tallies comprise numbered rubber wristbands. Numbers will be allocated at registration, and posted on the official notice board. Tallies shall be worn visibly, over clothing, on the right wrist by competitors at all times while afloat.
- 19.3 (c) When code flag B is displayed ashore the competitor shall check-out before racing by personally collecting their tally.
- 19.3 (d) The competitor shall individually check-in immediately on returning to shore after racing, but no later than the protest time limit, by personally returning the tally to tally control.
- 19.3 (e) Competitors may be penalised at the discretion of the jury for each race of the day on which they failed to comply with the instruction. This changes rule 63.1.
- 19.4. Competitors who require assistance shall blow a whistle or wave the paddle or one arm. The Race Committee reserves the right to assist competitors who in their opinion require assistance, regardless of the wishes of the competitor. This will not be grounds for redress. This changes rule 62.1(a).
- 19.5. When the Race Committee displays flag V with repetitive sounds, all official and support boats shall monitor the Race Committee VHF 72 channel for search and rescue instructions.

20. REPLACEMENT OF EQUIPMENT

- 20.1. Substitution of damaged or lost equipment will not be allowed unless approved in writing by the Race Committee. Requests for substitution shall be made to the Race Committee at the first reasonable opportunity.
- 20.2. Substitution of damaged equipment may be permitted provided the relevant form has been completed at the Race Office and both the damaged and the substituting equipment has been inspected by the Measurement Sub-Committee.
- 20.3. If the substitution was made on the water between races, both the damaged and the substituting equipment shall be presented to the Measurement Sub-Committee after the end of the day's racing. The substitution is subject to the approval of the Race Committee given retrospectively.

21. EQUIPMENT AND MEASUREMENT CHECKS [NP][DP]

A boat or equipment may be inspected at any time for compliance with the Class Rules, the Notice of Race or the Sailing Instructions. The top ten finishing boats of every race shall sail to the Equipment Inspector boat at the starboard side of the finishing line. No adjustments shall be made on the boat or equipment before the measurement inspection.

22. OFFICIAL AND ACCREDITED BOATS

- 22.1. Official boats will be identified as follows:

BOAT	FLAG
Race committee signals vessel	White flag with black 'PLAS HELI' & logo

Race committee boats	White flag with black 'PLAS HELI' & logo
Jury boats	Yellow flag with black 'Jury'
Safety boats	Orange flag "Safety Control" or White flag with black numbers
Equipment Inspector boats	Yellow flag with black 'Measurer'
Support boats	White flag with black National Letters

22.2. Accredited boats will be identified as follows:

Press	Yellow flag with black 'Press'
Spectators and VIP boats	Fluorescent yellow flag with black numbers

23. SUPPORT BOATS

- 23.1. [NP] Team Leaders, Coaches and other support personnel shall stay outside areas where boats are or will be racing from the time the orange flag is displayed until all boats of all divisions in that race have finished or the Race Committee signal a postponement or abandonment. To observe a race, support boats may move from leeward to windward through the port side of the course keeping well clear of the exclusion boundary, approximately 100 metres from the course area. Support boats may, after the last start of a race, move between the waiting and the finishing areas through the centre channel. (See diagram in Attachment 2). When a race committee or jury member indicates a support boat to move further from the course area, the mentioned boat shall do so immediately.
- 23.2. [DP] All boats associated with the infringing support boat may be penalised at the discretion of the Jury for the race on which the support personnel failed to comply with Notice of Race 15 and/or with this instruction. This changes rule 63.1
- 23.3. [NP] Competitors shall not approach any boat other than an official boat (see instruction 22.1) from their first warning signal of the day until they finish their last race for the day or the Race Committee signal no more racing today, whichever is later.
- 23.4. Coaches are encouraged to carry a working VHF radio.

24. TRASH DISPOSAL [NP][DP]

Trash may be placed aboard support and race committee boats.

25. BERTHING [NP][DP]

Boats shall be kept in their assigned places in the boat park.

26. PRIZES

Prizes will be awarded in accordance with the Notice of Race.



27. DISCLAIMER OF LIABILITY

The Organising Authority and any other party involved in the organisation of the Championship will accept no liability whatsoever for any injury, damage, loss or claim, whether personal or material, incurred by or inflicted to participants before, during or after the Championship.

28. RISK STATEMENT

Competitors participate in the regatta entirely at their own risk and responsibility. RRS 4 'Decision to Race' of the Racing Rules of Sailing states: "The responsibility for a boat's decision to participate in a race or to continue racing is hers alone." Sailing is by its nature an unpredictable sport and therefore inherently involves an element of risk. By taking part in the event, each competitor agrees and acknowledges that:

- a) They are aware of the inherent element of risk involved in the sport and accept responsibility for the exposure of themselves, their crew (if applicable) and their boat to such inherent risk whilst taking part in the event;
- b) They are responsible for the safety of themselves, their crew (if applicable), their boat, and their other property whether afloat or ashore.
- c) They accept responsibility for any injury, damage or loss to the extent caused by their own actions or omission;
- d) Their boat is in good order, equipped to sail in the event, and they are fit to participate;
- e) The provision of a race management team, patrol boats and other officials and volunteers by the event organiser does not relieve them of their own responsibilities;
- f) The provision of patrol boat cover is limited to such assistance, particularly in extreme weather conditions, as can be practically provided in the circumstances.

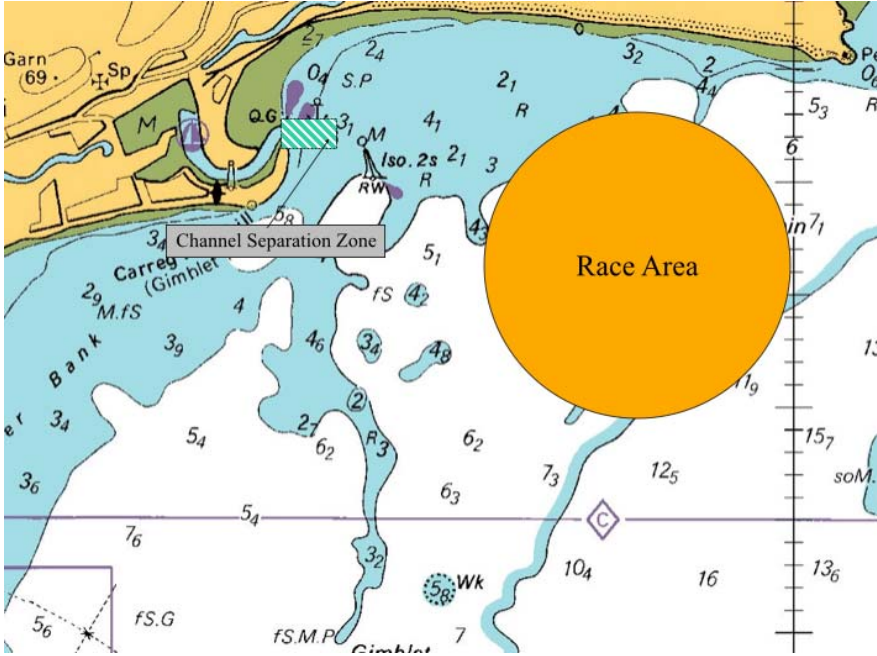
29. INSURANCE [NP]

The purchase of third-party liability event insurance from IODA is mandatory. The purchase will be arranged through the IODA at a cost of Euro 10 per competitor and per coach, payable to the organisers upon arrival, before registration is completed. Details of this insurance can be found at: http://www.optiworld.org/uploaded_files/thirdParty.pdf_1948_en.pdf

30. RIGHT TO USE NAME AND LIKENESS

In participating in this championship, a competitor automatically grants to the organising authority, the IODA and the sponsors of the championship the right in perpetuity to make, use and show at their discretion any motion pictures, still pictures and live, taped or filmed television and other reproductions of him or her during the championship, and of all of his or her material related to the championship, without compensation.

ATTACHMENT 1: RACING AREA



ATTACHMENT 2: THE COURSE

