



# SINGAPORE NATIONAL YOUTH CHAMPIONSHIP

17 – 21 Mar 2009

National Sailing Centre

Organising Authority: Singapore Sailing Federation

## NOTICE OF RACE

### 1 RULES

- 1.1 The regatta will be governed by the rules as defined in *The Racing Rules of Sailing*.
- 1.2 No national prescriptions will apply.
- 1.3 If there is a conflict between languages the English text will take precedence.

### 2 ADVERTISING

Advertising will be restricted to Category C.

### 3 ELIGIBILITY AND ENTRY

- 3.1 The regatta is open to all boats of the following classes:
  - Optimist,
  - Byte,
  - Laser Standard,
  - Laser Radial,
  - Bic Techno
  - 420 Spinnaker
  - 420 Non-Spinnaker
  - Hobie 16 Spinnaker

that are members of a club affiliated to SingaporeSailing or in the case of international entrants, are members of a club affiliated to their own national authority.

- 3.2 All competitors shall be under the age of 19 years on 31 Dec 2009 (born after 31 Dec 1990), EXCEPT for:  
Laser Standard, Laser Radial, Bic Techno and Hobie 16 classes, who shall be under the age of 21 years on 31 Dec 2009 (born after 31 Dec 1988).
- 3.3 Singaporean 420 competitors must have at least SingaporeSailing Level 2 Proficiency certification. All other Singaporean competitors in the other classes must have at least SingaporeSailing Level 1 Proficiency certification.
- 3.4 Eligible boats may enter by completing the attached form and sending it, together with the required fee, to:

Singapore Sailing Federation  
1500 East Coast Parkway  
National Sailing Centre  
Singapore 468963

Tel: +65 6444 4555  
Website: [www.sailing.org.sg](http://www.sailing.org.sg)

by the closing date, **10 Mar 2009**.

- 3.5 Late entries may be accepted at the discretion of the Organising Authority and shall be subjected to a late entry fee.
- 3.6 A minimum of 6 entries in each class is required to form an event.
- 3.7 If the minimum number of entries is not received for any particular class, the decision to allow the class to sail will be at the discretion of the organising authority.

#### **4 FEES**

Required fees (inclusive of GST) are as follows:

<i>Class</i>	<i>Entry Fee</i>	<i>Late Entry Fee</i>
Optimist	\$64.20	\$96.30
Byte	\$64.20	\$96.30
Laser	\$64.20	\$96.30
Laser Radial	\$64.20	\$96.30
Bic Techno	\$64.20	\$96.30
420	\$128.40	\$192.60
Hobie 16	\$128.40	\$192.60

The fees are non-refundable.

#### **5 QUALIFYING SERIES AND FINAL SERIES**

- 5.1 If the number of entries received for any class at the close of entries is less than 80, the regatta will consist of a single series for that class. If the number of entries received for any class at the close of entries is more than 80, the regatta will consist of a qualifying series and a final series for that class.
- 5.2 For the qualifying series, the entire fleet will be divided into 4 groups: White, Yellow, Pink, and Brown. When more than 4 groups are required, appropriate measures will be taken. The seeding of boats into the 4 groups will be based on the current National Ranking where available or another method as determined by the Organising Authority. The seeding will be done as soon as possible after the closing of entries and shall not be subject to protest. This changes rule 60.1(b).
- 5.3 Each race shall consist of 2 groups racing together and where possible each group shall race each other group an equal number of times.
- 5.4 Groups may be started in any order however the Race Committee will attempt to start as follows:

<b>Race No.</b>	<b>Groups</b>	<b>Colours</b>	<b>Race No.</b>	<b>Groups</b>	<b>Colours</b>
Race 1A	1 & 2	White & Brown	Race 1B	3 & 4	Yellow & Pink
Race 2A	2 & 4	Brown & Pink	Race 2B	1 & 3	White & Yellow
Race 3A	1 & 4	White & Pink	Race 3B	2 & 3	Brown & Yellow
Race 4A	3 & 4	Yellow & Pink	Race 4B	1 & 2	White & Brown
Race 5A	1 & 3	White & Yellow	Race 5B	2 & 4	Brown & Pink

- 5.5 The Group Flags shall be displayed in place of Class Flags. All boats will display a coloured ribbon (corresponding with the colour of their groups) attached securely to the top of their mast or sprit. The organiser will provide these ribbons.
- 5.6 The group flags and colours are:  
Group 1 – White  
Group 2 – Brown  
Group 3 – Yellow  
Group 4 – Pink
- 5.7 When more than 4 groups are required, appropriate measures will be taken.
- 5.8 Boats will be assigned to final-series fleets Gold, Silver, Bronze, etc., on the basis of their ranks in the qualifying-series. The final-series fleets will have, as nearly as possible, equal size but so that the Silver fleet is not larger than the Gold fleet, etc. Boats with the best qualifying-series ranks will race all final-series races in the Gold fleet, boats with the next-best qualifying-series ranks will race in the Silver fleet, etc.
- 5.9 Any recalculation of qualifying-series ranking after boats have been assigned to final-series fleets will not affect the assignments except that a redress decision may promote a boat to a higher fleet.

## **6 SCHEDULE**

- 6.1 Dates of racing:  
*Date*  
17 – 21 Mar 2009                      Racing
- 6.2 There will be no limit to the number of races per day.
- 6.3 The scheduled time of the warning signal for the first race each day is 1100hrs.
- 6.4 On the last day of the regatta no warning signal will be made after 1530hrs.

## **7 SAILING INSTRUCTIONS**

The sailing instructions will be available after the closing date at the National Sailing Centre.

## **8 VENUE**

Attachment 1 shows the location of the racing areas.

## 9 THE COURSES

The diagrams in Attachment 2 show the courses, including the order in which marks are to be passed, and the side on which each mark is to be left.

## 10 PENALTY SYSTEM

- 10.1 Appendix P will apply as changed by instructions 10.2 and 10.3.
- 10.2 On the first protest, if a boat is protested after she has finished, she will be given a scoring penalty of 6 points, without a hearing. If her score results in a score worse than DSQ, the penalty will be corresponding to DSQ.
- 10.3 Rule P2.3 will not apply and rule P2.2 is changed so that it will apply to any protest after the first one.
- 10.4 For the Hobie 16 class, rules 44.1 and 44.2 are changed so that only one turn, including one tack and one gybe, is required.
- 10.5 For the Bic Techno class, Rule 44.2 is changed so that two turns are replaced by one 360° turn with no requirement for tacks or gybes.
- 10.6 Action taken under Appendix P will not be grounds for redress by a competitor.

## 11 SCORING

- 11.1 A maximum of 12 races are scheduled.
- 11.2 When a qualifying series and a final series are organised,
  - Qualifying Series
    - (a) At least 5 qualifying races are required to be completed for each group to constitute the qualifying series and to enter the final series.
    - (b) The qualifying series will be concluded at the end of the racing day on which 5 or more qualifying races have been completed.
    - (c) When at least 5 qualifying races are sailed, a boat's qualifying score will be the total of her race scores excluding her worst excludable score.
    - (d) A minimum of 5 qualifying races are required to be completed to constitute a regatta.
  - Final Series
    - (e) The final series shall consist of all remaining races not sailed in the qualifying series. All the race scores in the qualifying and final series shall be used in determining the final series score, less any discards allowed.
    - (f) When 7 or more qualifying and final series races (combined) have been completed for a particular fleet, a boat's series score in that fleet shall be the total of her race scores excluding her worst excludable score.
    - (g) When 9 or more qualifying and final series races (combined) have been completed for a particular fleet, a boat's series score in that fleet shall be the total of her race scores excluding her two worst excludable scores.
    - (h) The number of final series races need not be equal for all final series groups.
- 11.3 When no qualifying series is organised, a minimum of 5 races are required to be completed to constitute a series.
  - (a) When fewer than 7 races have been completed, a boat's series score will be the total of her race scores.

- (b) When from 7 to 8 races have been completed, a boat's series score will be the total of her race scores excluding her worst excludable score.
  - (c) When 9 or more races have been completed, a boat's series score will be the total of her race scores excluding her two worst excludable scores.
- 11.4 There will be only one final official ranking list for the regatta and for each class. Boats in the gold fleet will rank higher than those in the silver fleet, who shall in turn be ranked higher than those in bronze fleet, etc.

**12 SUPPORT BOATS**

Support boats shall be identified by a white flag with the letter corresponding to the course area.

**13 BOAT STORAGE**

Boats shall be kept in their assigned places in the boat park.

**14 RADIO COMMUNICATION**

Except in an emergency, a boat shall neither make radio transmissions while racing nor receive radio communications not available to all boats. This restriction also applies to mobile telephones.

**15 PRIZES**

Prizes will be given as follows:

**Optimist**

Gold Fleet	1 <sup>st</sup> to 10 <sup>th</sup>
Silver Fleet	1 <sup>st</sup> to 10 <sup>th</sup>
Bronze Fleet (If applicable)	1 <sup>st</sup> to 10 <sup>th</sup>

**Byte**

Gold Fleet	1 <sup>st</sup> to 10 <sup>th</sup>
Silver Fleet	1 <sup>st</sup> to 10 <sup>th</sup>

**Laser**

1<sup>st</sup> to 3<sup>rd</sup>

**Laser Radial**

1<sup>st</sup> to 3<sup>rd</sup>

**Bic Techno**

1<sup>st</sup> to 3<sup>rd</sup>

**420**

Spinnaker Division	1 <sup>st</sup> to 3 <sup>rd</sup>
Non-Spinnaker Division (If applicable)	1 <sup>st</sup> to 3 <sup>rd</sup>

**Hobie 16 Spinnaker**

1<sup>st</sup> to 3<sup>rd</sup>

**16 DISCLAIMER OF LIABILITY**

Competitors participate in the regatta entirely at their own risk. See rule 4, Decision to Race. The organising authority will not accept any liability for material damage or personal injury or death sustained in conjunction with or prior to, during, or after the regatta.

**17 INSURANCE**

All competitors are required to have appropriate insurance coverage.

**18 FURTHER INFORMATION**

For further information please contact

Singapore Sailing Federation  
1500 East Coast Parkway  
National Sailing Centre  
Singapore 468963

Tel: +65 6444 4555  
Fax: +65 6448 0485  
Email: [info@singaporesailing.org.sg](mailto:info@singaporesailing.org.sg)  
Website: [www.sailing.org.sg](http://www.sailing.org.sg)



SingaporeSailing

**Singapore National Youth Championship  
17 – 21 Mar 2009, National Sailing Centre  
Entry Form**

Attn: Singapore Sailing Federation  
1500 East Coast Parkway  
National Sailing Centre  
Singapore 468963

Tel: +65 6444 4555  
Website: www.sailing.org.sg

Helm's Name: \_\_\_\_\_  
(Enter full name)

NRIC: \_\_\_\_\_

Class of Boat: \_\_\_\_\_  
(Indicate Laser Std/Laser Radial if Laser class  
or Spinnaker/Non-Spinnaker if 420 class)

Sail No: \_\_\_\_\_

School: \_\_\_\_\_

Club: \_\_\_\_\_

Home Addr: \_\_\_\_\_

Date of Birth: \_\_\_\_\_

\_\_\_\_\_

Sex: \_\_\_\_\_

Email: \_\_\_\_\_

Tel No: \_\_\_\_\_

Crew's Name: \_\_\_\_\_

Mobile: \_\_\_\_\_

**Entry Fees**

The entry fees (inclusive of GST) will be non-refundable:

<u>Class</u>	<u>By 10 Mar</u>	<u>After 10 Mar</u>
Optimist	\$64.20	\$96.30
Byte	\$64.20	\$96.30
Laser	\$64.20	\$96.30
Laser Radial	\$64.20	\$96.30
Bic Techno	\$64.20	\$96.30
420	\$128.40	\$192.60
Hobie 16	\$128.40	\$192.60

Enclosed is S\$\_\_\_\_\_ being payment for the entry fee.

**Declaration by competitor**

I/We agree to be bound by the Racing Rules of Sailing.

I/We acknowledge and accept the risks associated with participation in the regatta and waive all rights against and release the Organising Authority in respect of any loss of life and injury to persons, or loss of or damage to property, suffered in connection therewith; and acknowledge that participation in the regatta is entirely at my/our own risk and responsibility.

\_\_\_\_\_  
Helm's  
Signature

\_\_\_\_\_  
Parent's Signature  
(Required for sailors  
21 years & below)

\_\_\_\_\_  
Crew's Signature

\_\_\_\_\_  
Parent's Signature  
(Required for sailors  
21 years & below)

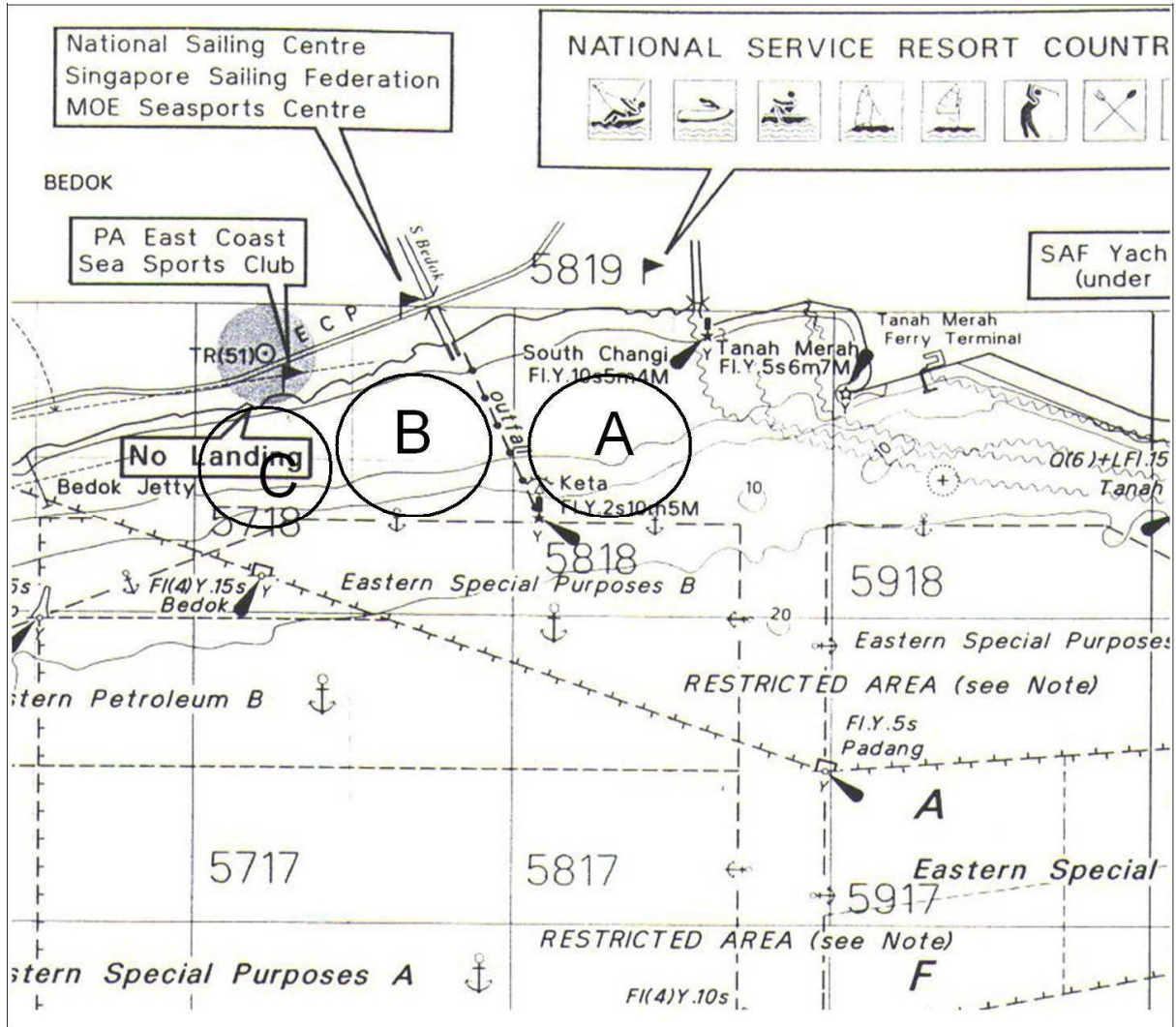
# ATTACHMENT 1

## RACING AREAS

Course Area Alpha (Byte, Laser, Laser Radial)

Course Area Bravo (Optimist)

Course Area Charlie (420, Bic Techno, Hobie 16)





## ATTACHMENT 2

### THE COURSES

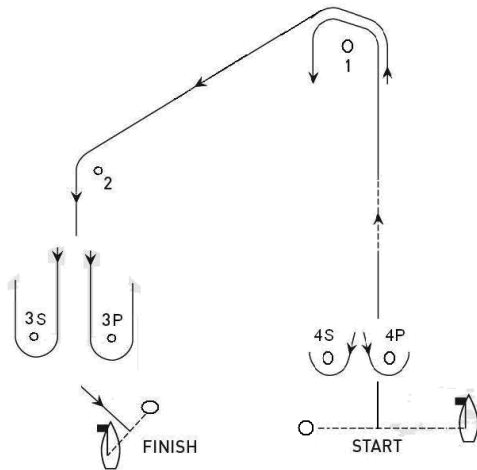
#### Courses Alpha & Bravo only

##### The Gate

Is formed between 3P and 3S(outer loop); 4P and 4S(inner loop); as shown in the diagram.

When required as part of the course a sailor is required to sail through the gate and leave 3P or 4P to port, or 3S or 4S to starboard.

#### Trapezoid Course



##### *Trapezoid Courses*

(All marks to port except defined in gate rounding)

##### **Course Flag "O1" (Outer Loop – 1 lap)**

Start, Mark 1, Mark 2, Gate, Mark 2, Mark 3P, Finish

##### **Course Flag "O2" (Outer Loop – 2 laps)**

Start, Mark 1, Mark 2, Gate, Mark 2, Gate, Mark 2, Mark 3P, Finish

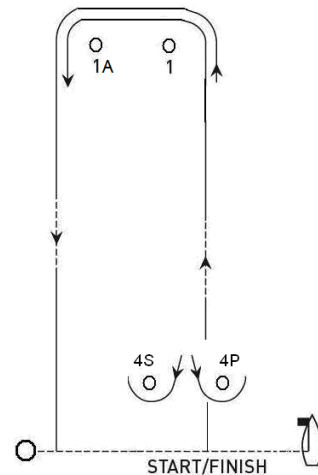
##### **Course Flag "I1" (Inner Loop – 1 lap)**

Start, Mark 1, Gate, Mark 1, Mark 2, Mark 3P, Finish

##### **Course Flag "I2" (Inner Loop – 2 laps)**

Start, Mark 1, Gate, Mark 1, Gate, Mark 1, Mark 2, Mark 3P, Finish

#### Windward / Leeward Course



##### *Windward / Leeward Courses*

(All marks to port except defined in gate rounding)

##### **Course Flag "W 1"**

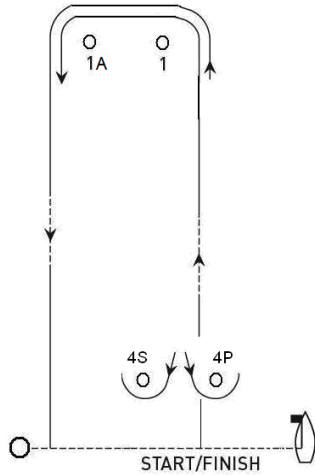
Start, Mark 1, Mark 1A, Gate, Mark 1, Finish

##### **Course Flag "W 2"**

Start, Mark 1, Mark 1A, Gate, Mark 1, Mark 1A, Gate, Mark 1, Mark 1A, Finish

## Course Charlie only

### Windward / Leeward Course



*Windward / Leeward Courses*  
(All marks to port except defined in gate rounding)

#### **Course Flag “W 1”**

Start, Mark 1, Mark 1A, Gate, Mark 1, Finish

#### **Course Flag “W 2”**

Start, Mark 1, Mark 1A, Gate, Mark 1, Mark 1A, Gate, Mark 1, Mark 1A, Finish