

USING SAILWAVE IN AN IODA EVENT

This document explains how to work with Sailwave to score a series where the fleet is divided according to the standards followed in IODA events:

- Sailors remain in the same division throughout the regatta
- Every race has 2 or 3 starts depending on the number of divisions (4 or 6)
- The ranking of each race will have two firsts, two seconds, etc and no average is calculated
- Points for DNF are equal to the double of the number of sailors in each division, plus one. (but see Notes)

Setting up a Regatta from scratch

Conventions used in this document:

Menu means go to the mentioned item in the menu. The slash means that you must click twice, first in the menu and then in the drop down.

OK means click on the OK or Accept button.

A) Open Sailwave.

B) Configuring the general settings:

1- Menu File/New Series: fill in form with any number of races and competitors. OK. Can be modified later. A spreadsheet appears in the main area of the window.

2- Menu Set up/User interface (or button below menu): tick the box "Spilt starts allowing multiple 1sts, 2nds, etc". OK.

3- Menu Set up/Series properties: fill in with the info needed.

4- Menu Set up/Scoring system: this dialog offers several tabs, some of which will have to be modified.

4.1- Tab Race Scoring:

Select ISAF Appendix A standard low point

Round off calculated points to 1

At the bottom right, under "Split starts" tick box "Allow multiple 1st, 2nd, etc" (this option will not appear if you haven't first tick the corresponding box in the 'user interface' dialog box as explained in 2 above)

4.2- Tab Scoring codes:

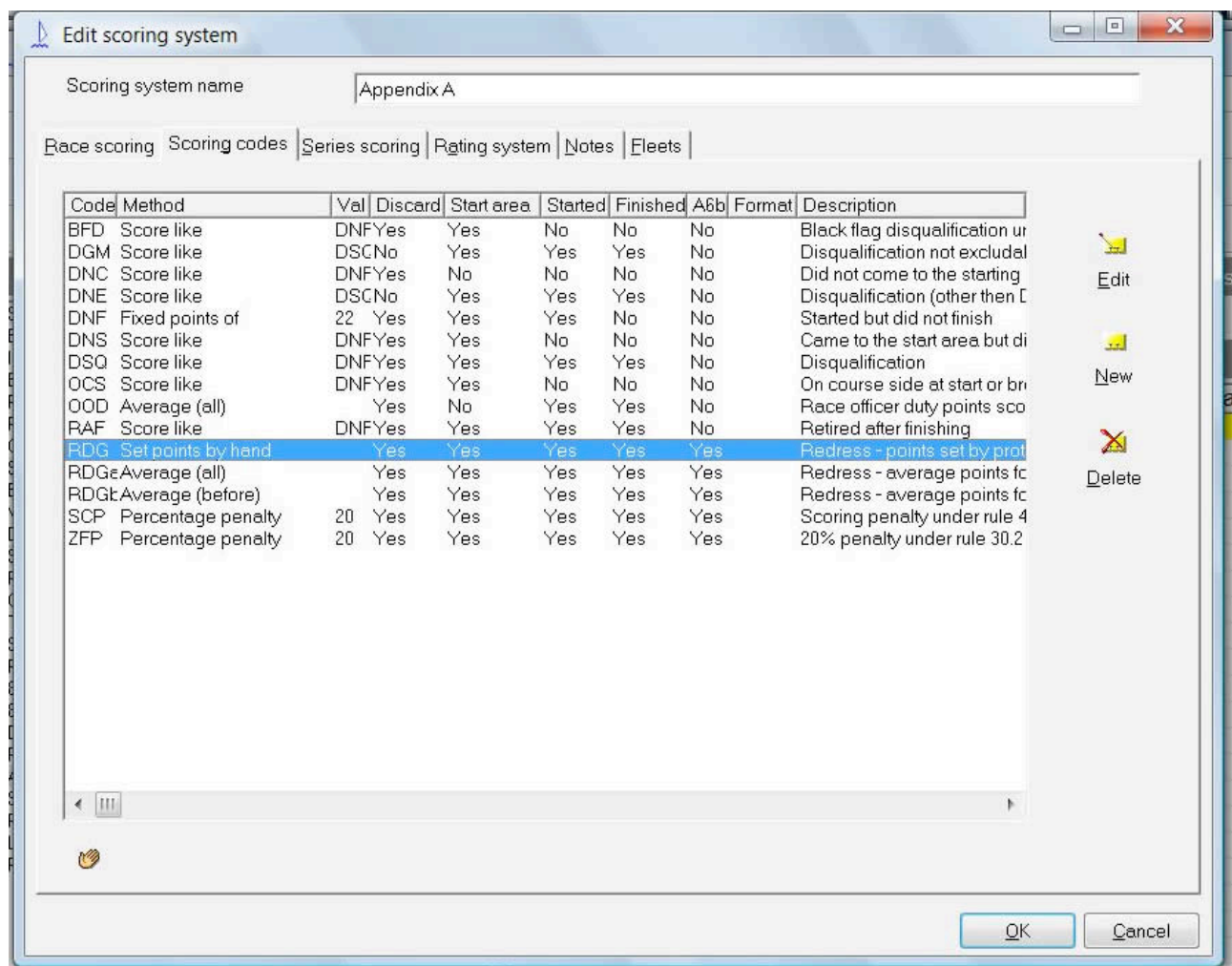
4.2.a- Select the row with DNF in the first column (called "Code"). Click on edit (to the right of the dialog box, with a yellow logo). Two tabs appear.

Tab Method: choose radio button "Score fixed number of points N" (second button from the bottom). At the top, fill in the field labelled "Value" with the corresponding value (a number as explained in Notes of this document). OK. (The edit dialog box closes and we are again in the Tab Scoring codes)

4.2.b- Select the row with DNC in first column. Click on edit. In Method, select the radio button "use same method as another code" and fill in the field Value with DNF. OK. (The edit dialog box closes and we are again in the Tab Scoring codes)

4.2.c- Select the row with RDG. Click Edit. Check that RDG is selected in the field "Code" at the top. Select the radio button "Set the points by hand" (third button from bottom). OK.

The Tab Scoring Codes should now look like the following, where 22 should be the number corresponding to your event, which will depend on the number of sailors and divisions:



4.3- Tab series scoring: fill in the field of the Discard profile as follows:

4.3.a- For a World event, with 15 races and discards when the first 6 and the first 12 have taken place

0,0,0,0,0,1,1,1,1,1,1,2,2,2,2

4.3.b- For a Continental event, with 12 races and discards when the first 6 and 11 races have taken place

0,0,0,0,0,1,1,1,1,1,2,2

4.4- Tab Rating System: check that None is selected

C) Adding sailors:

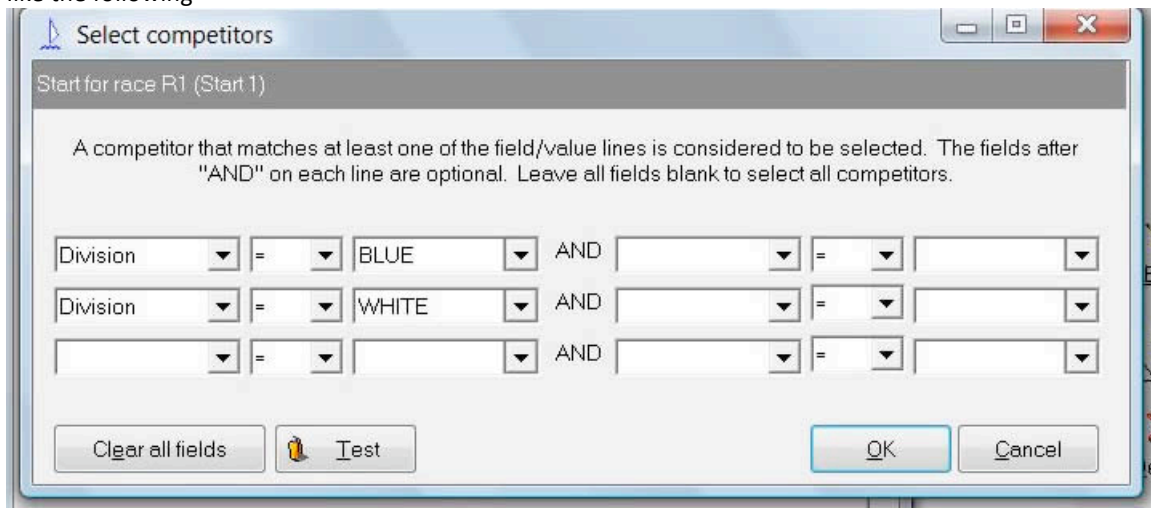
On the spreadsheet, click on any cell to highlight it. Once highlighted, double click on it to show the Edit Competitor dialog box. (This can also be done by Menu Edit/Edit competitor). Insert the info needed for each competitor. If the box "Edit next" at the bottom is ticked, the dialog box will remain open and you won't have to highlight the cells every time.

The allocation to divisions should have been done before, with the list of registered sailors sorted out according to the Sailing Instructions. To assign the divisions in the Edit competitor dialog box, the first time you'll have to write the name of the Division by hand. For the next sailor the division will be already included in the drop down menu in that field.

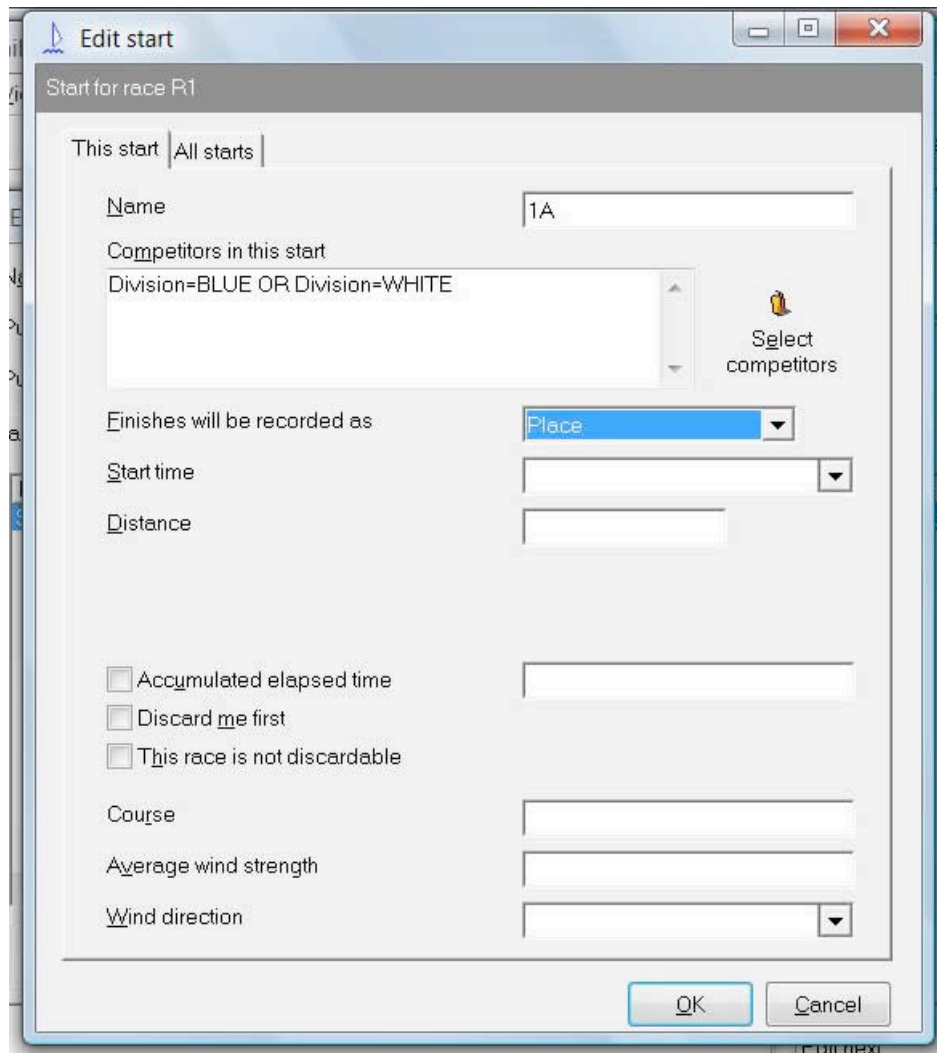
Optional: columns in the spreadsheet can be hidden when not in use. To do so, either Menu View/Columns and in the dialog box write Yes or No to hide or show the desired columns.

D) Setting up the races:

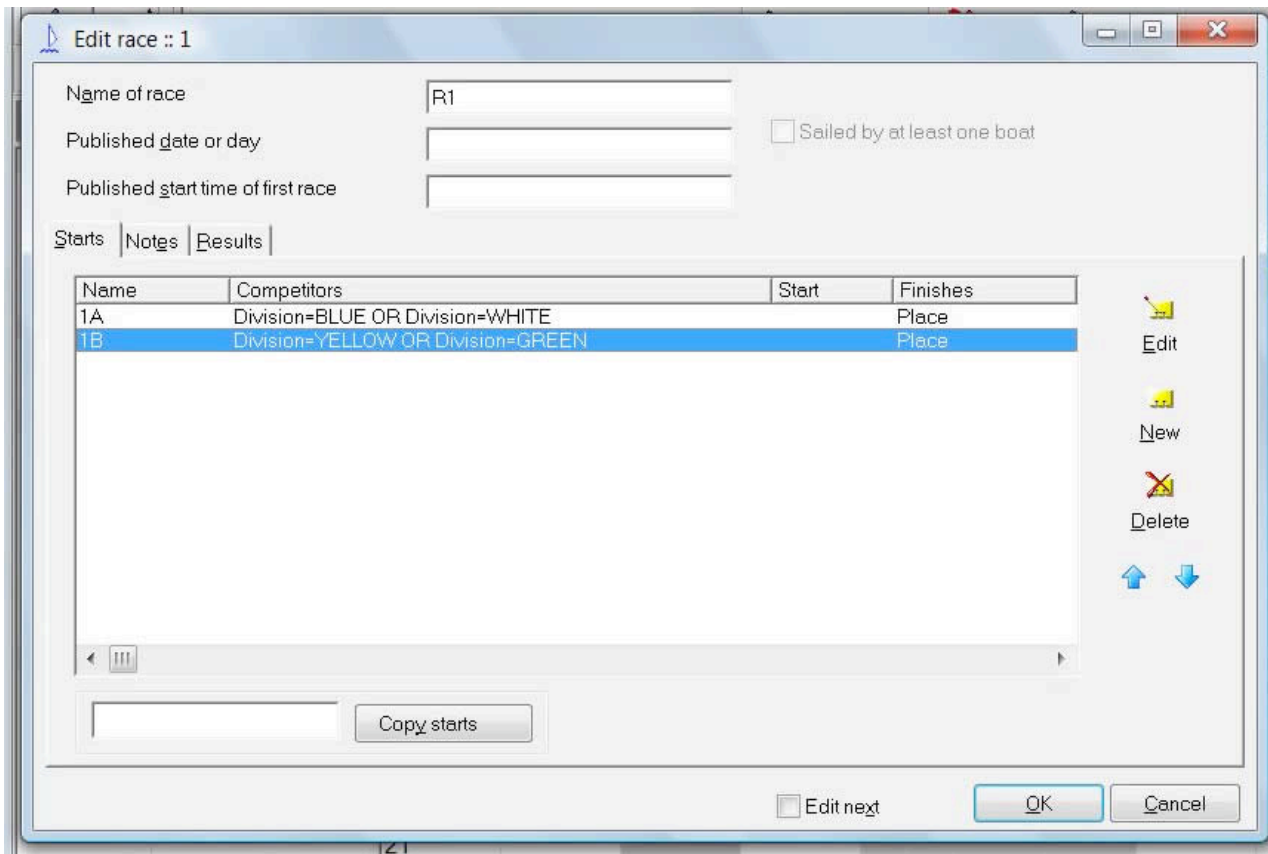
Menu Edit/Edit race: select the race to edit. In the dialog box "Edit race" first enter the name of the race e.g. R1 (in this example we are going to refer to the first race of a hypothetical series: R1 with starts 1A and 1B). Select the tab Starts and highlight the only start that appears (Start 1). Click on Edit (to the right, with yellow logo) In the new dialog box fill in the Name with 1A and then click on Select competitors. Another dialog box appears. In the first drop down menu to the left select Division. In the drop down menu to the right of the = select one of the divisions to sail in race 1A. In the drop down menu right below the first one select Division again and in the drop down menu to the right of the = choose the other division to sail race 1A. Nothing must be selected to the right of the words AND. The dialog box should look like the following



OK. The Edit Start menu should look like the following. Please note that between the two divisions it says OR. If the word that appears in the middle is AND, the starts are not correctly defined.



Click OK. Again in the tab Starts, click on New (below Edit). A second row appears. Select that row and click Edit. Do the same, this time calling the start 1B. OK. OK. The tab Starts should now look like in the following image:



E) Entering the results:

This is quite straightforward. Menu Tools/ 'Enter results using the sail num wizard', select the race and click next. Enter all the results for each complete race. That means that you should enter the finishing orders of races 1A and 1B (e.g.) Discards and other code related scores are applied by right clicking on the result to be modified and selecting the corresponding code. However, for discretionary penalties see below.

F) To apply a discretionary penalty or a redress:

Right click on the cell corresponding to the result to be altered. Choose 'set result code of' and then select 'RDG'. RDG now appears on the cell instead of the finishing place. Double click on RDG (or Menu Edit/Edit result). On the dialog box that appears the radio button code should be selected showing RDG inside the field. Fill in the field points with the penalty points and OK. For a discretionary penalty the abbreviation should be DPI, which can be configured in the Edit Scoring System window, as described in B.4.2.c above.

G) Scoring the series:

Click on the corresponding button or Menu Tools/Score series. Make sure that the first radio button is selected and click on score.

Notes:

The number of points for a DNF, DNC, DSQ, etc shall be the max possible number of sailors in a race plus 1. For example in a fleet of 121 sailors with four divisions we will have three divisions of 30 sailors and one of 31. The points for the DNF are: $30 + 31 + 1 = 62$. If we have 122 sailors and four divisions there will be two divisions of 30 sailors and two of 31. In this case $DNF = 31 + 31 + 1 = 63$.

